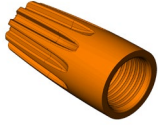




**WIRE-NUT®
WIRE CONNECTORS**

**MODELS
73B® & 74B®**

FEATURES/BENEFITS:



- WIDE WIRE RANGE ENABLES USE ON VARIETY OF APPLICATIONS
- FIXED, SQUARE-WIRE SPRING CREATES ITS OWN THREADS
- MAINTAINS A SECURE CONNECTION THAT WILL NOT RELAX OVER TIME
- POSITIVE-GRIP SHELL DESIGN PROVIDES FAST, EASY INSTALLATION
- PRE-TWISTING OF WIRES IS NOT REQUIRED
- REUSEABLE FOR EASY CIRCUIT CHANGES AND ADDITIONS

ELECTRICAL:

VOLTAGE: 300 VOLTS MAX.
600 VOLTS MAX.*
(* 1,000 VOLTS MAX. SIGNS & FIXTURES)

APPLICATION TOOLS:

- ACAM (AUTOMATIC CONNECTOR APPLICATION MACHINE)
- WIRE-NUT® Wire Connector Sockets: **30-904** (73B®), **30-906** (74B®), **H-632** (73B®, 74B®), **30-902** (73B®, 74B®)

PHYSICAL:

HOUSING: POLYPROPYLENE (UL 94V-2 FLAME RATED)
INSERT: STEEL
PLATING: ZINC

STANDARDS & SPECIFICATIONS:

UL LISTED: UL 486C
CSA CERTIFIED: C22.2 NO. 188
RoHS COMPLIANT

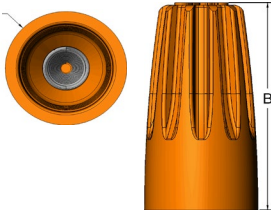


WIRE RANGE & COMBINATIONS:

MODEL	73B® (ORANGE)	74B® (YELLOW)	COMBINATIONS: Listed as a Pressure-Type wire connector for use on the following solid and/or stranded Cu/Cu wire combinations. Consult UL Approved Wire Combination for a complete list of all combinations.
WIRE RANGE:	MIN. 1 #18 w/1 #20 MAX. 2 #14	MIN. 2 #18 MAX. 4 #14 w/1 #18	
WIRE STRIP LENGTH	≤ #16 AWG: 3/8" (9.5 mm) All Others: 5/16" (8 mm)	≤ #16 AWG: 7/16" (11 mm) All Others: 3/8" (9.5 mm)	

DIMENSIONS:

∅ A



MODEL	A		B	
	INCHES	mm	INCHES	mm
73B®	0.44	11	0.86	22
74B®	0.55	14	0.95	24

FACTORY CONTACT:

IDEAL INDUSTRIES, INC.
BECKER PLACE
SYCAMORE, IL 60178

PHONE: (815) 895-5181
(800) 435-0705 in USA

NOTES: